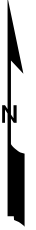
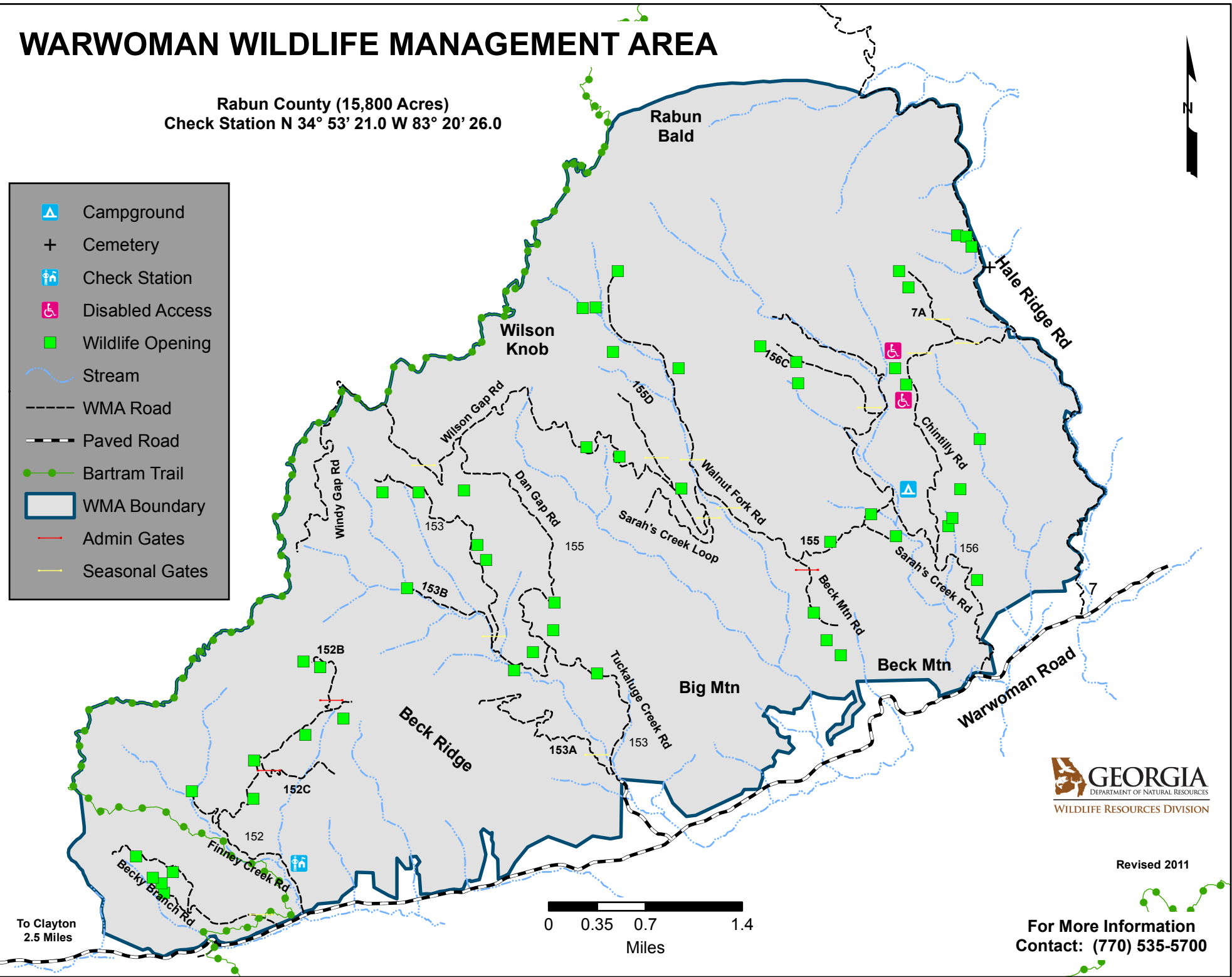


WARWOMAN WILDLIFE MANAGEMENT AREA

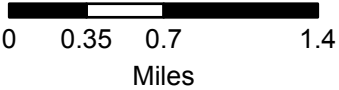
Rabun County (15,800 Acres)
Check Station N 34° 53' 21.0 W 83° 20' 26.0



- Campground
- Cemetery
- Check Station
- Disabled Access
- Wildlife Opening
- Stream
- WMA Road
- Paved Road
- Bartram Trail
- WMA Boundary
- Admin Gates
- Seasonal Gates



To Clayton
2.5 Miles



Revised 2011

For More Information
Contact: (770) 535-5700