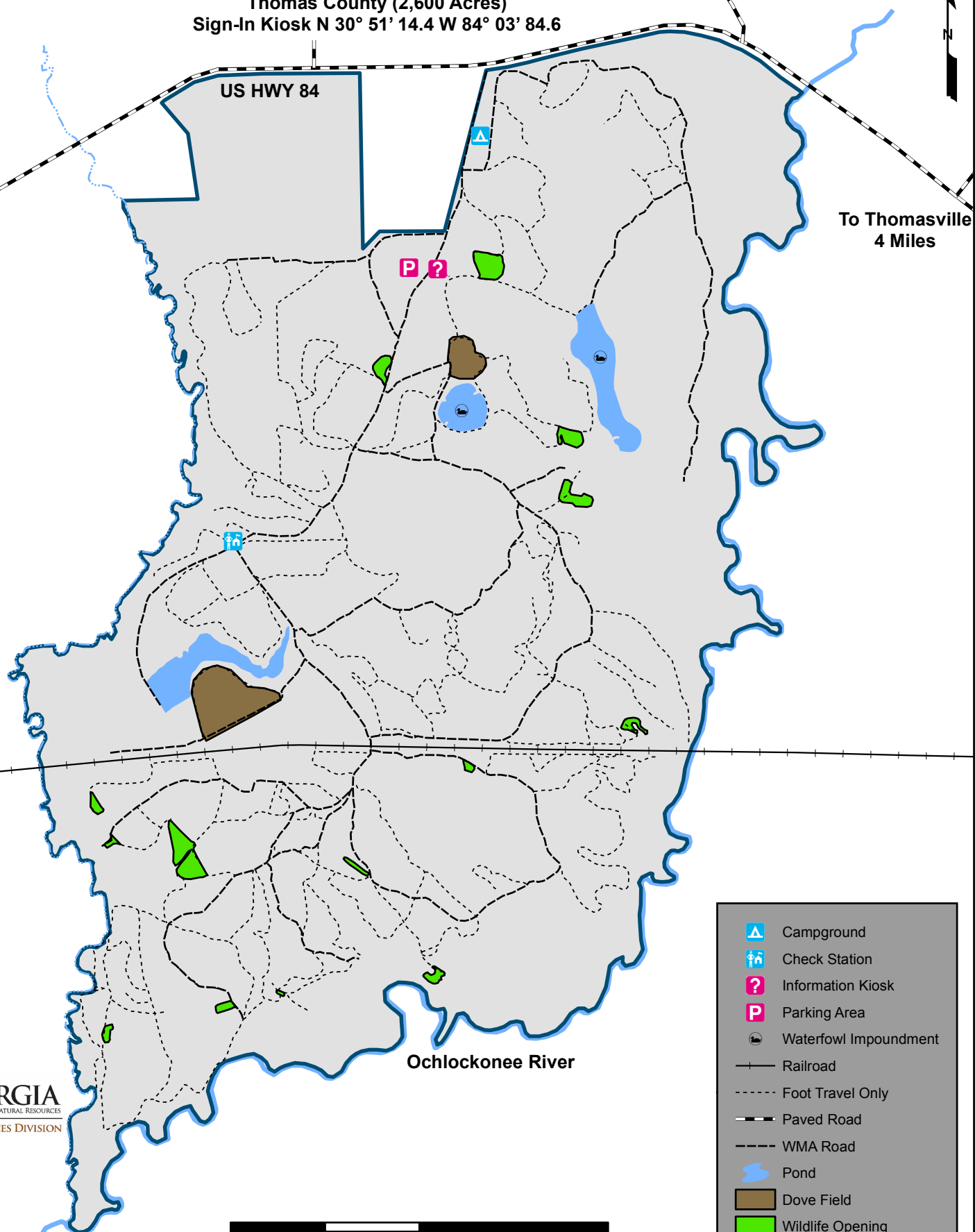
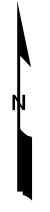


RIVER CREEK WILDLIFE MANAGEMENT AREA

Thomas County (2,600 Acres)
Sign-In Kiosk N 30° 51' 14.4 W 84° 03' 84.6

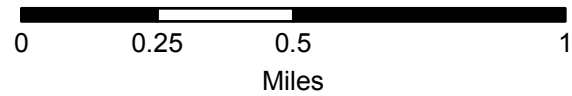


To Thomasville
4 Miles



Revised 2011

For More Information
Contact (229) 430-4254



	Campground
	Check Station
	Information Kiosk
	Parking Area
	Waterfowl Impoundment
	Railroad
	Foot Travel Only
	Paved Road
	WMA Road
	Pond
	Dove Field
	Wildlife Opening
	WMA Boundary