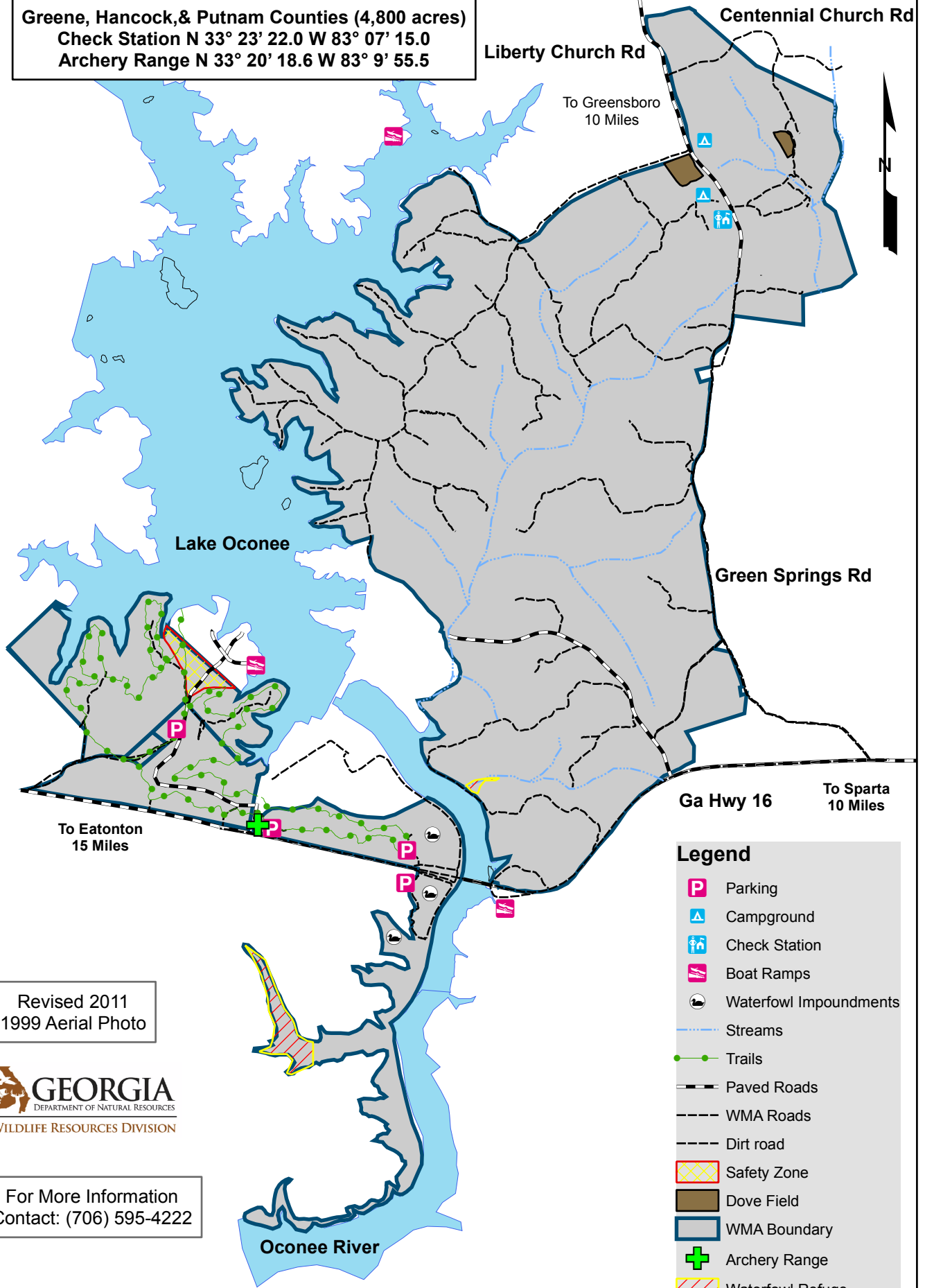


OCONEE WILDLIFE MANAGEMENT AREA

Greene, Hancock, & Putnam Counties (4,800 acres)
 Check Station N 33° 23' 22.0 W 83° 07' 15.0
 Archery Range N 33° 20' 18.6 W 83° 9' 55.5



Revised 2011
 1999 Aerial Photo



For More Information
 Contact: (706) 595-4222

Legend

- Parking
- Campground
- Check Station
- Boat Ramps
- Waterfowl Impoundments
- Streams
- Trails
- Paved Roads
- WMA Roads
- Dirt road
- Safety Zone
- Dove Field
- WMA Boundary
- Archery Range
- Waterfowl Refuge

