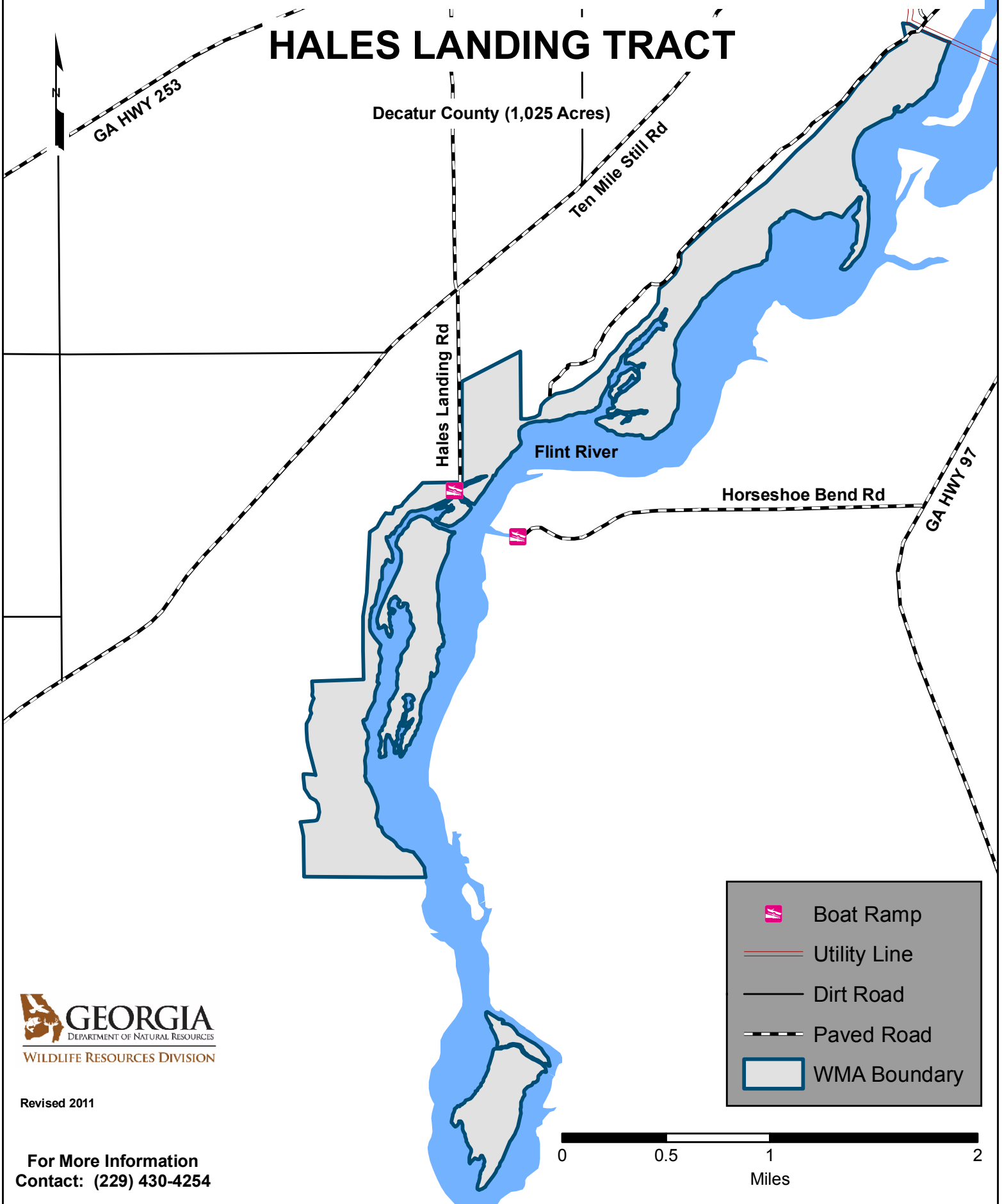







LAKE SEMINOLE WILDLIFE MANAGEMENT AREA HALES LANDING TRACT



 **GEORGIA**
DEPARTMENT OF NATURAL RESOURCES
WILDLIFE RESOURCES DIVISION

Revised 2011

For More Information
Contact: (229) 430-4254

-  Boat Ramp
-  Utility Line
-  Dirt Road
-  Paved Road
-  WMA Boundary

0 0.5 1 2
Miles