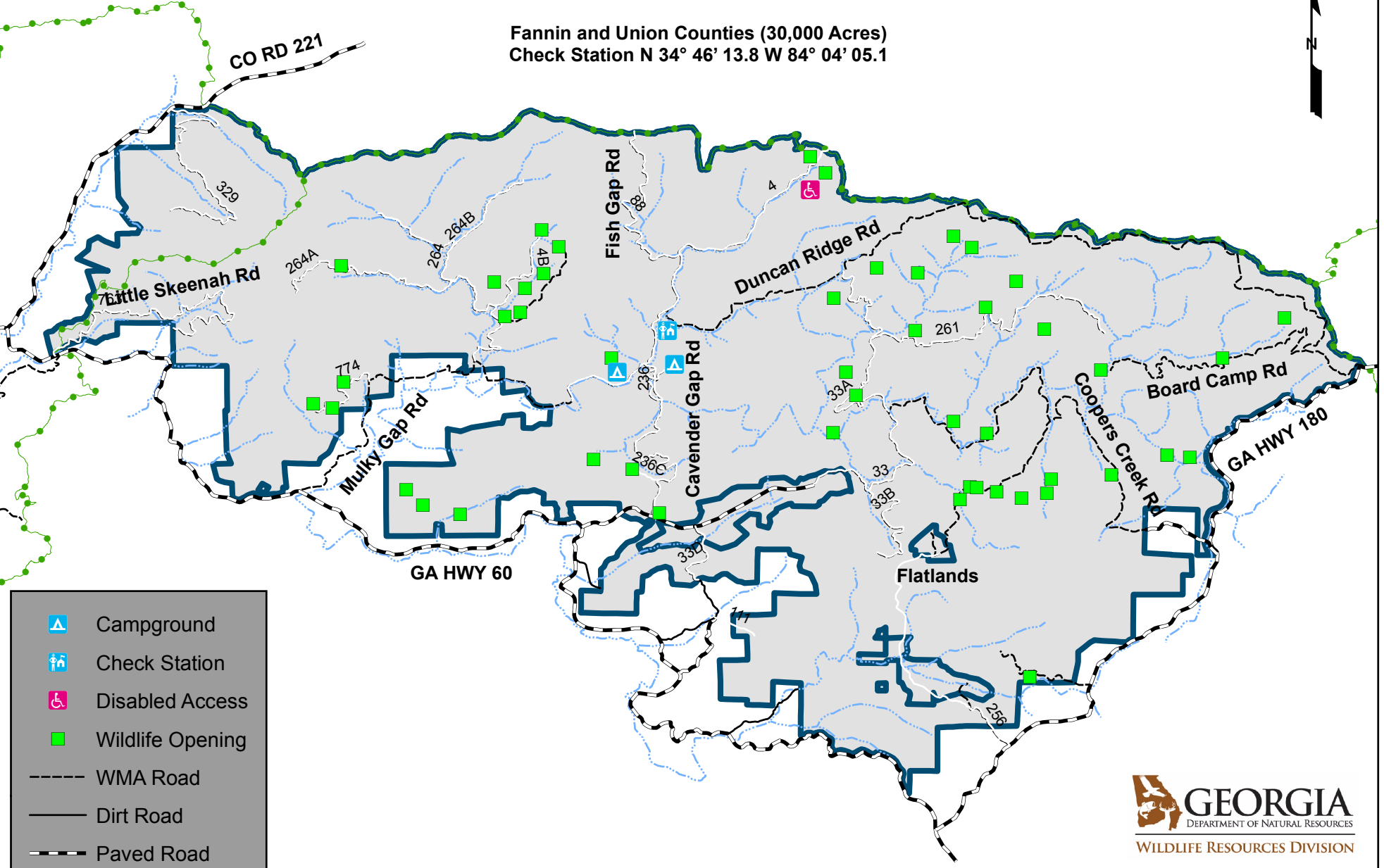
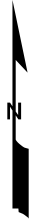
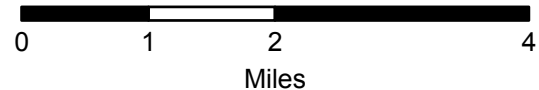


COOPER'S CREEK WILDLIFE MANAGEMENT AREA

Fannin and Union Counties (30,000 Acres)
Check Station N 34° 46' 13.8 W 84° 04' 05.1



- Campground
- Check Station
- Disabled Access
- Wildlife Opening
- WMA Road
- Dirt Road
- Paved Road
- Stream
- Trail
- WMA Boundary



Revised 2011

For More Information
Contact: (770) 535-5700