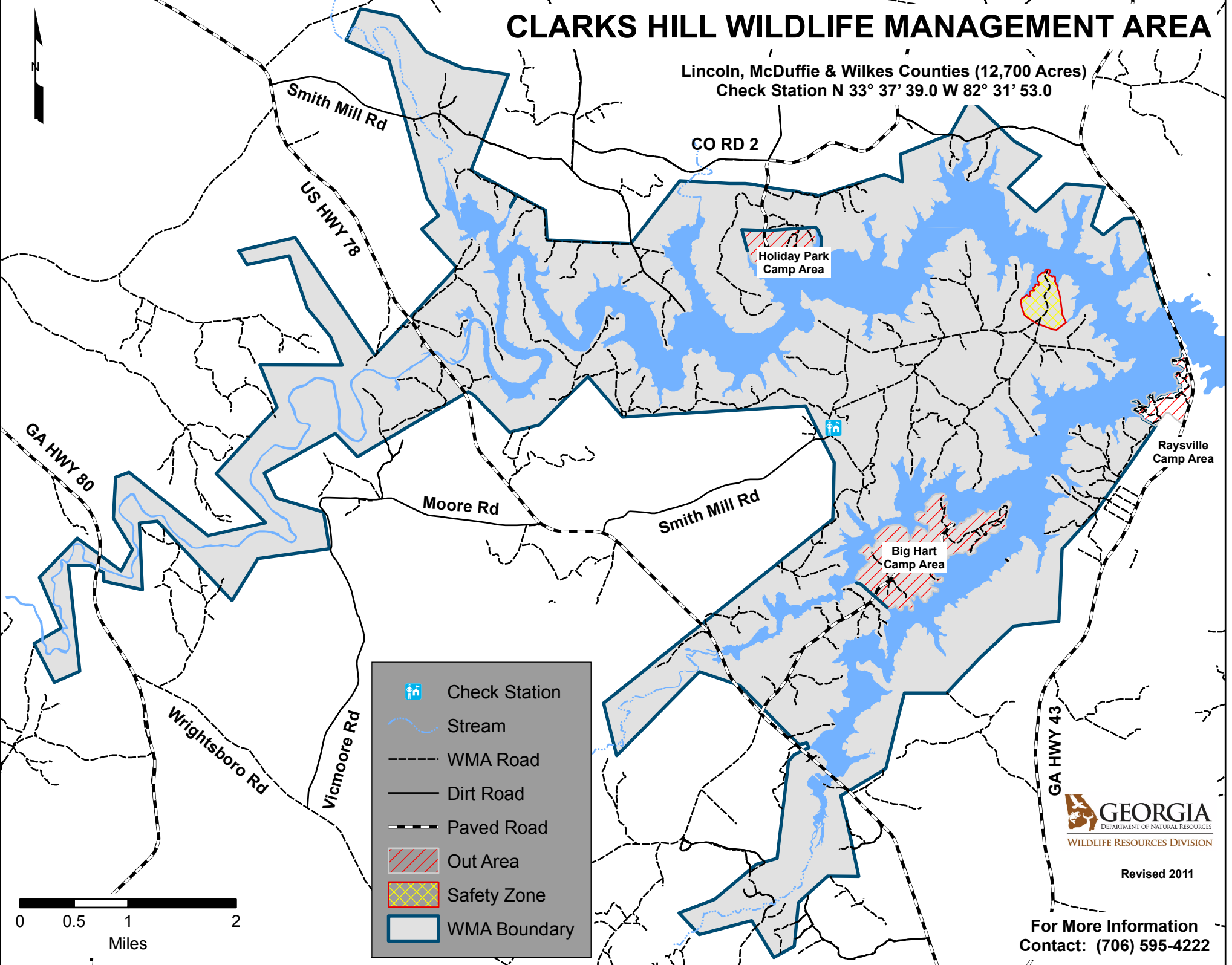


CLARKS HILL WILDLIFE MANAGEMENT AREA

Lincoln, McDuffie & Wilkes Counties (12,700 Acres)
Check Station N 33° 37' 39.0 W 82° 31' 53.0



 **GEORGIA**
DEPARTMENT OF NATURAL RESOURCES
WILDLIFE RESOURCES DIVISION

Revised 2011

For More Information
Contact: (706) 595-4222