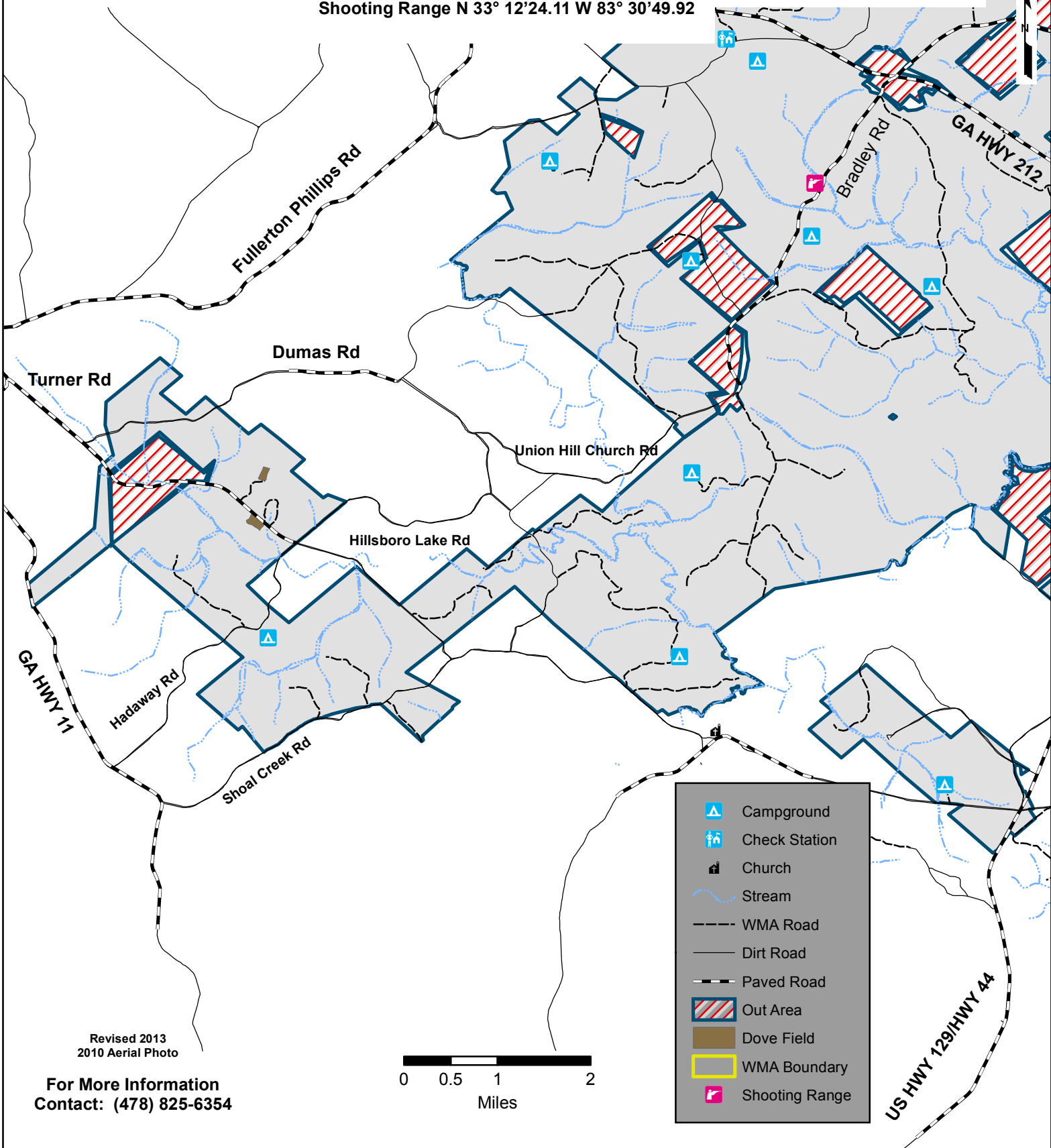


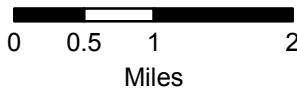
# CEDAR CREEK WILDLIFE MANAGEMENT AREA SOUTH

Jasper, Jones, & Putnam Counties (37,815 Acres)  
Check Station N 33° 13' 45.1 W 83° 31' 36.1  
Shooting Range N 33° 12'24.11 W 83° 30'49.92



Revised 2013  
2010 Aerial Photo

For More Information  
Contact: (478) 825-6354



	Campground
	Check Station
	Church
	Stream
	WMA Road
	Dirt Road
	Paved Road
	Out Area
	Dove Field
	WMA Boundary
	Shooting Range