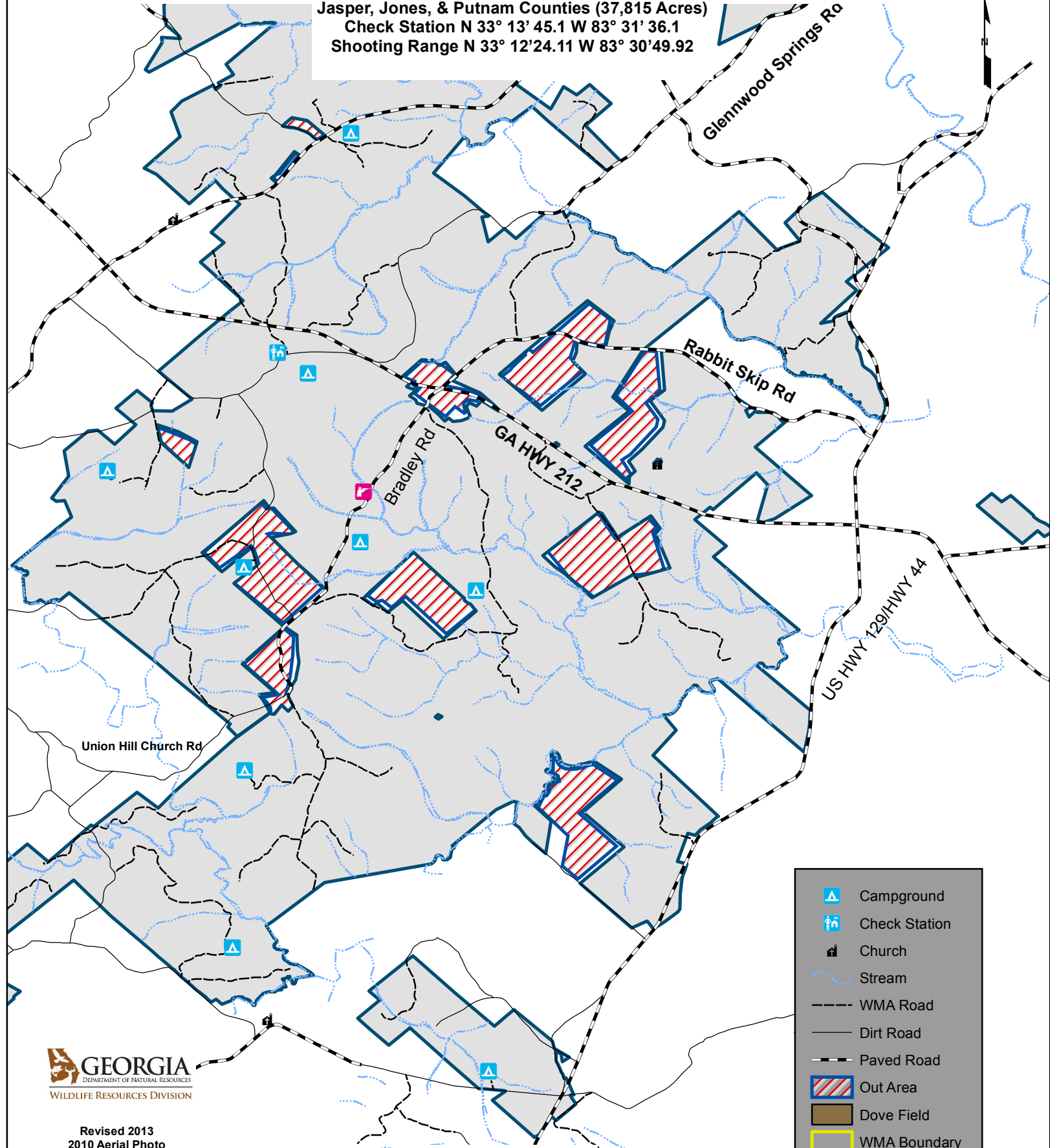


CEDAR CREEK WILDLIFE MANAGEMENT AREA CENTRAL

Jasper, Jones, & Putnam Counties (37,815 Acres)
 Check Station N 33° 13' 45.1" W 83° 31' 36.1"
 Shooting Range N 33° 12' 24.11" W 83° 30' 49.92"



- Campground
- Check Station
- Church
- Stream
- WMA Road
- Dirt Road
- Paved Road
- Out Area
- Dove Field
- WMA Boundary
- Shooting Range



Revised 2013
 2010 Aerial Photo

For More Information
 Contact: (478) 825-6354

