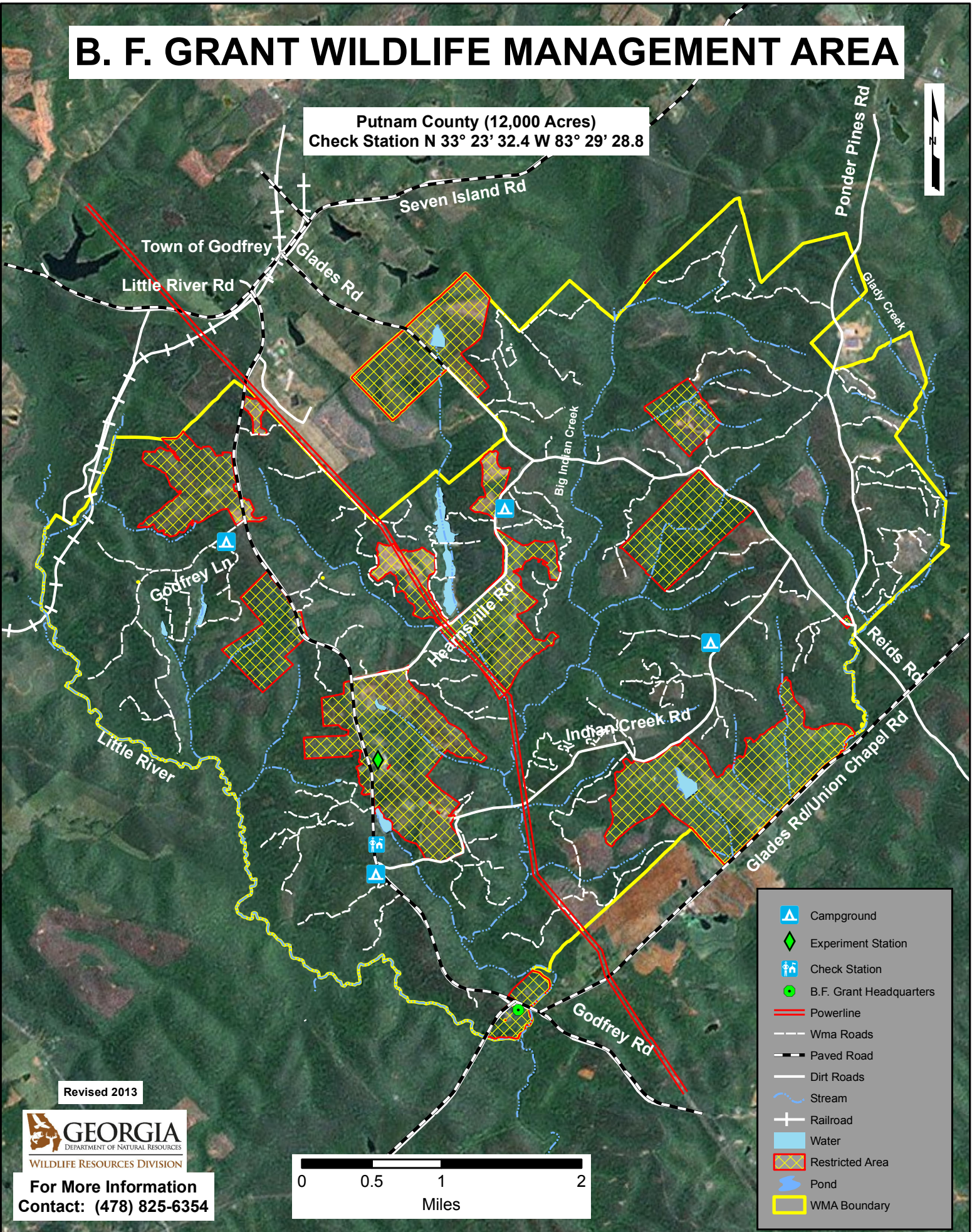


B. F. GRANT WILDLIFE MANAGEMENT AREA

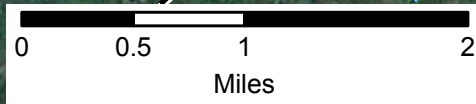
Putnam County (12,000 Acres)
Check Station N 33° 23' 32.4 W 83° 29' 28.8



Revised 2013



For More Information
Contact: (478) 825-6354



- Campground
- Experiment Station
- Check Station
- B.F. Grant Headquarters
- Powerline
- Wma Roads
- Paved Road
- Dirt Roads
- Stream
- Railroad
- Water
- Restricted Area
- Pond
- WMA Boundary