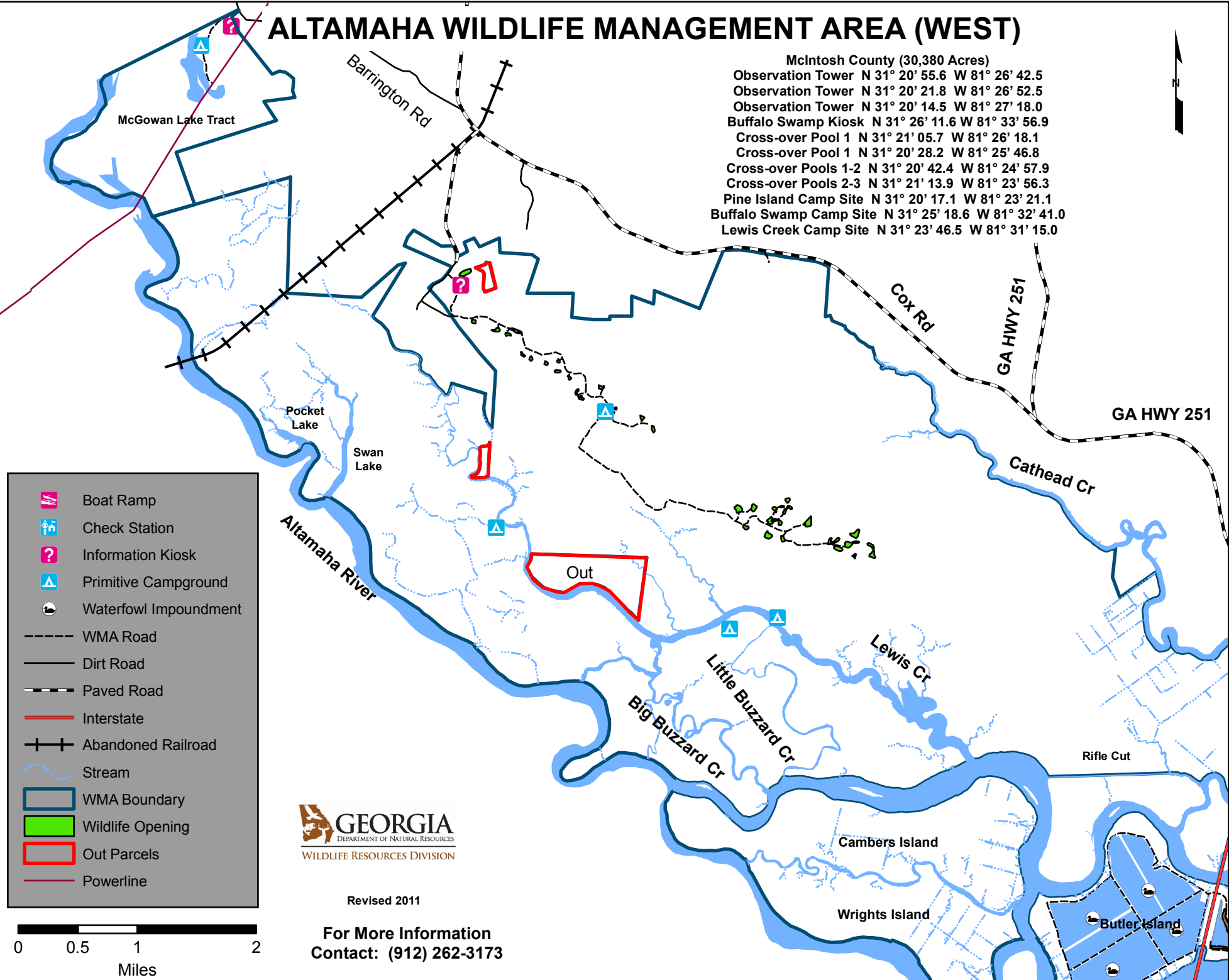
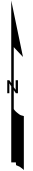





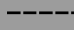


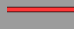








ALTAMAHA WILDLIFE MANAGEMENT AREA (WEST)

McIntosh County (30,380 Acres)

Observation Tower	N 31° 20' 55.6	W 81° 26' 42.5
Observation Tower	N 31° 20' 21.8	W 81° 26' 52.5
Observation Tower	N 31° 20' 14.5	W 81° 27' 18.0
Buffalo Swamp Kiosk	N 31° 26' 11.6	W 81° 33' 56.9
Cross-over Pool 1	N 31° 21' 05.7	W 81° 26' 18.1
Cross-over Pool 1	N 31° 20' 28.2	W 81° 25' 46.8
Cross-over Pools 1-2	N 31° 20' 42.4	W 81° 24' 57.9
Cross-over Pools 2-3	N 31° 21' 13.9	W 81° 23' 56.3
Pine Island Camp Site	N 31° 20' 17.1	W 81° 23' 21.1
Buffalo Swamp Camp Site	N 31° 25' 18.6	W 81° 32' 41.0
Lewis Creek Camp Site	N 31° 23' 46.5	W 81° 31' 15.0



-  Boat Ramp
-  Check Station
-  Information Kiosk
-  Primitive Campground
-  Waterfowl Impoundment
-  WMA Road
-  Dirt Road
-  Paved Road
-  Interstate
-  Abandoned Railroad
-  Stream
-  WMA Boundary
-  Wildlife Opening
-  Out Parcels
-  Powerline



Revised 2011

For More Information
Contact: (912) 262-3173

